

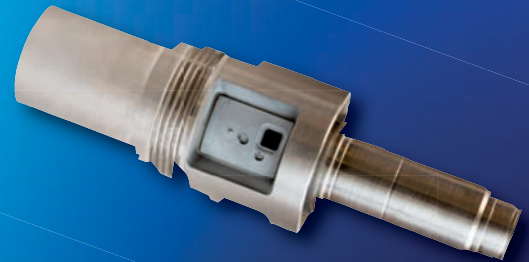
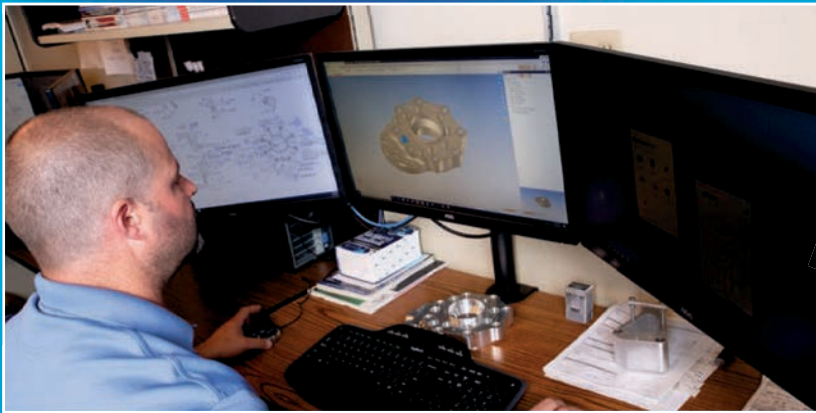
K&G MANUFACTURING COMPANY



“OUR NEXT ORDER DEPENDS ON THE QUALITY OF OUR LAST SHIPMENT”

ENGINEERING

- ❖ Complete CAD Designed Workholding Built In-House
- ❖ TopSolid CAD/CAM Process Modeling Software
- ❖ Mastercam CAM Software
- ❖ WinTool Digital Cutting Tool Management
- ❖ DFM/Design for Manufacturing Customer Support



"OUR NEXT ORDER DEPENDS ON THE QUALITY OF OUR LAST SHIPMENT"

MACHINING

CNC MILLING

- ❖ Low & High Volume Production
- ❖ Flexible Manufacturing Systems
- ❖ 4 Plus Axis Horizontal Machining Capability



CNC TURNING & MULTI-TASKING

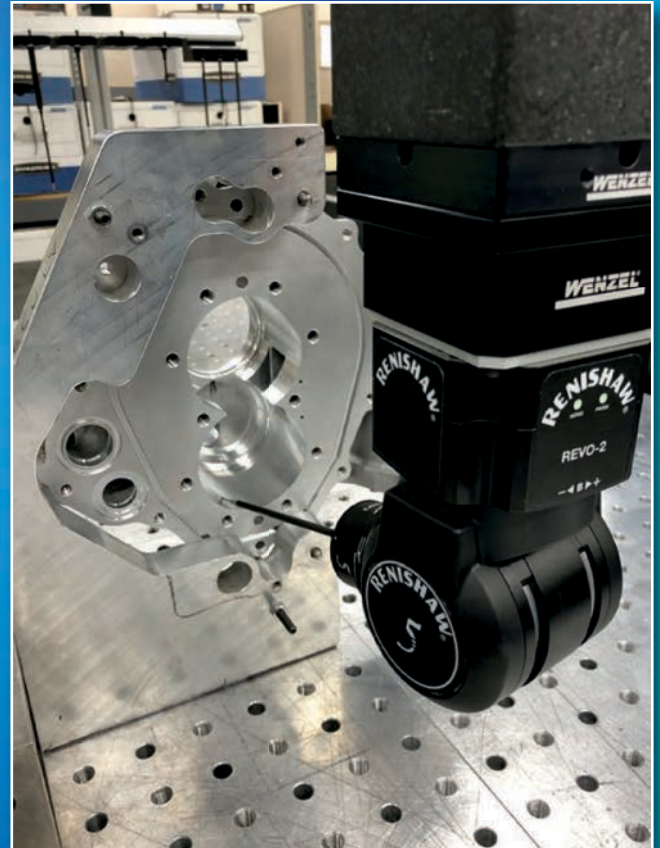
- ❖ 5-Axis Turn/Mill Capability
- ❖ 3" Diameter Barfeed Capacity with Live Tooling/Y-Axis
- ❖ Twin Spindle / Twin Turret Multi-Tasking Turning



“OUR NEXT ORDER DEPENDS ON THE QUALITY OF OUR LAST SHIPMENT”

QUALITY ASSURANCE

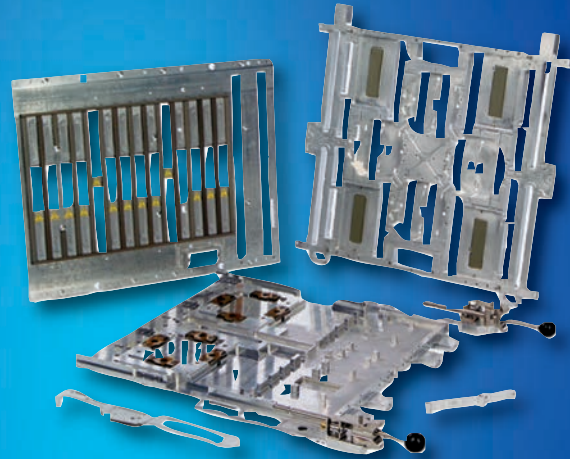
- ❖ AS9100 Certified
- ❖ ISO9001 Certified
- ❖ Advanced Quality Planning
- ❖ Integrated Data Collection/SPC
- ❖ AS9102/PPAP
- ❖ NIST Traceable Calibration System



“OUR NEXT ORDER DEPENDS ON THE QUALITY OF OUR LAST SHIPMENT”

VALUE ADDED SERVICES

- ❖ Plating
- ❖ Painting/Powder Coating
- ❖ Pressure Testing
- ❖ NDT
- ❖ Heat Treating
- ❖ Assembly
- ❖ Custom Packaging



“OUR NEXT ORDER DEPENDS ON THE QUALITY OF OUR LAST SHIPMENT”

Privately Owned Business Since 1937

41,000 Square Foot Facility

Continually Investing in State of the Art Technology

Commitment to Continuous Improvement

❖ ISO9001 Certified

❖ AS9100 Certified

Producing High Precision Machined Parts That Meet or Exceed Customer Specifications

226 Park Avenue NW, Faribault, MN 55021

Phone 507-334-5501

www.kgmfg.com

